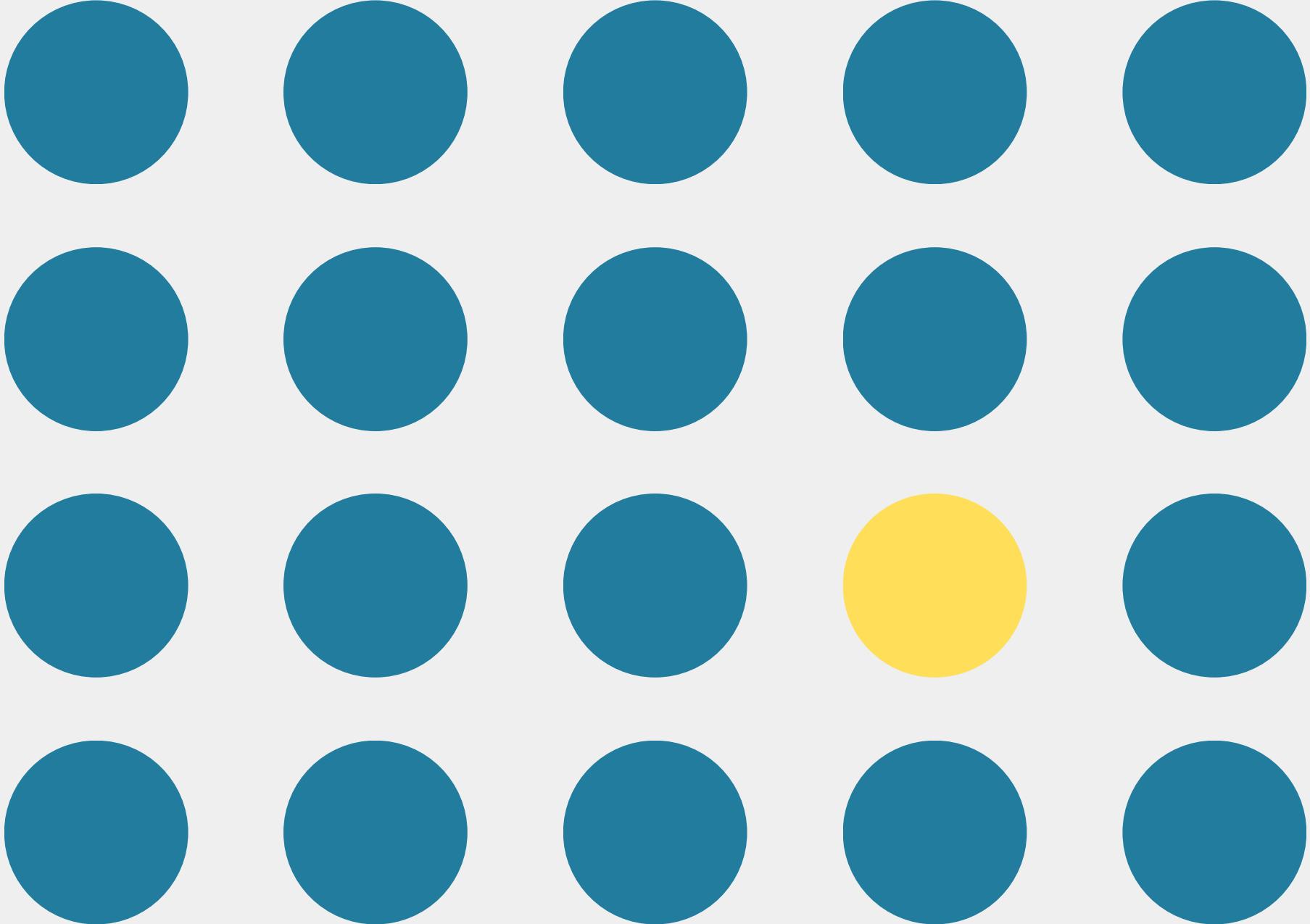




THE ONLY ONE IN THE ROOM

Teaching as Welcoming-In

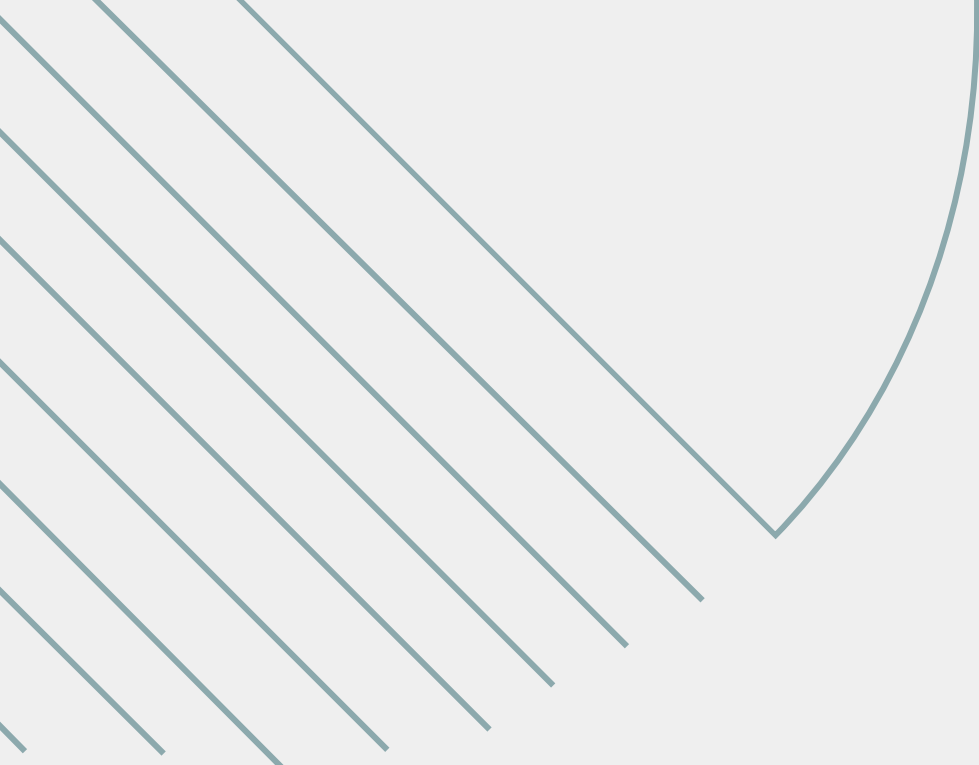
Meghan Rose Allen, PhD
Mount Allison University
meallen@mta.ca



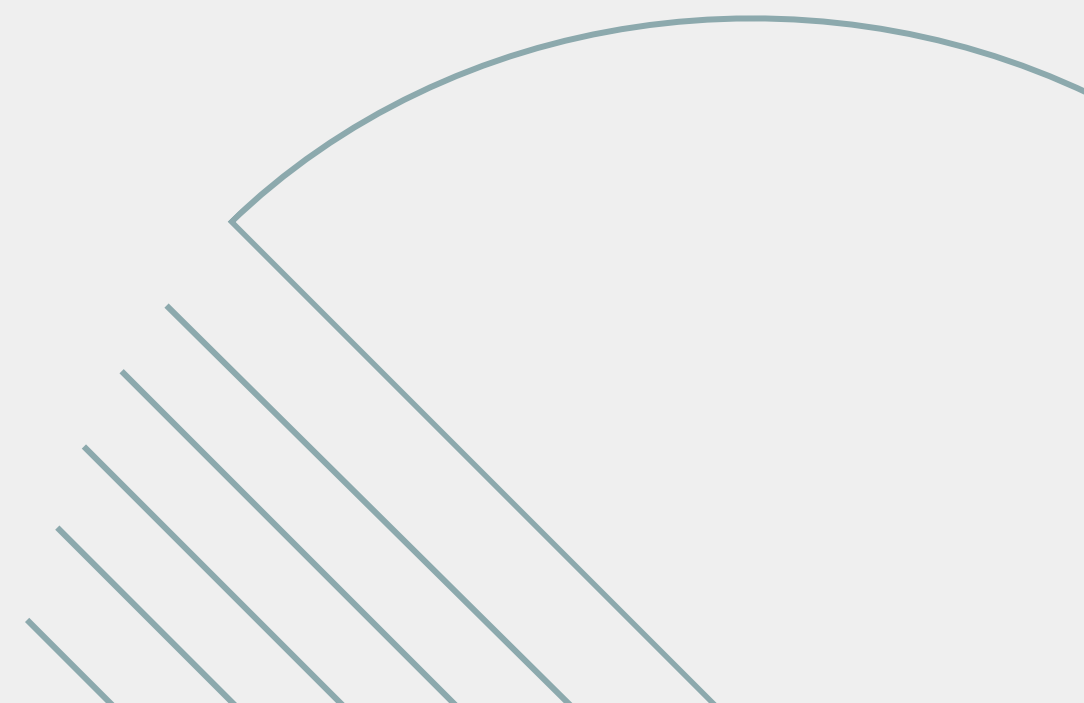


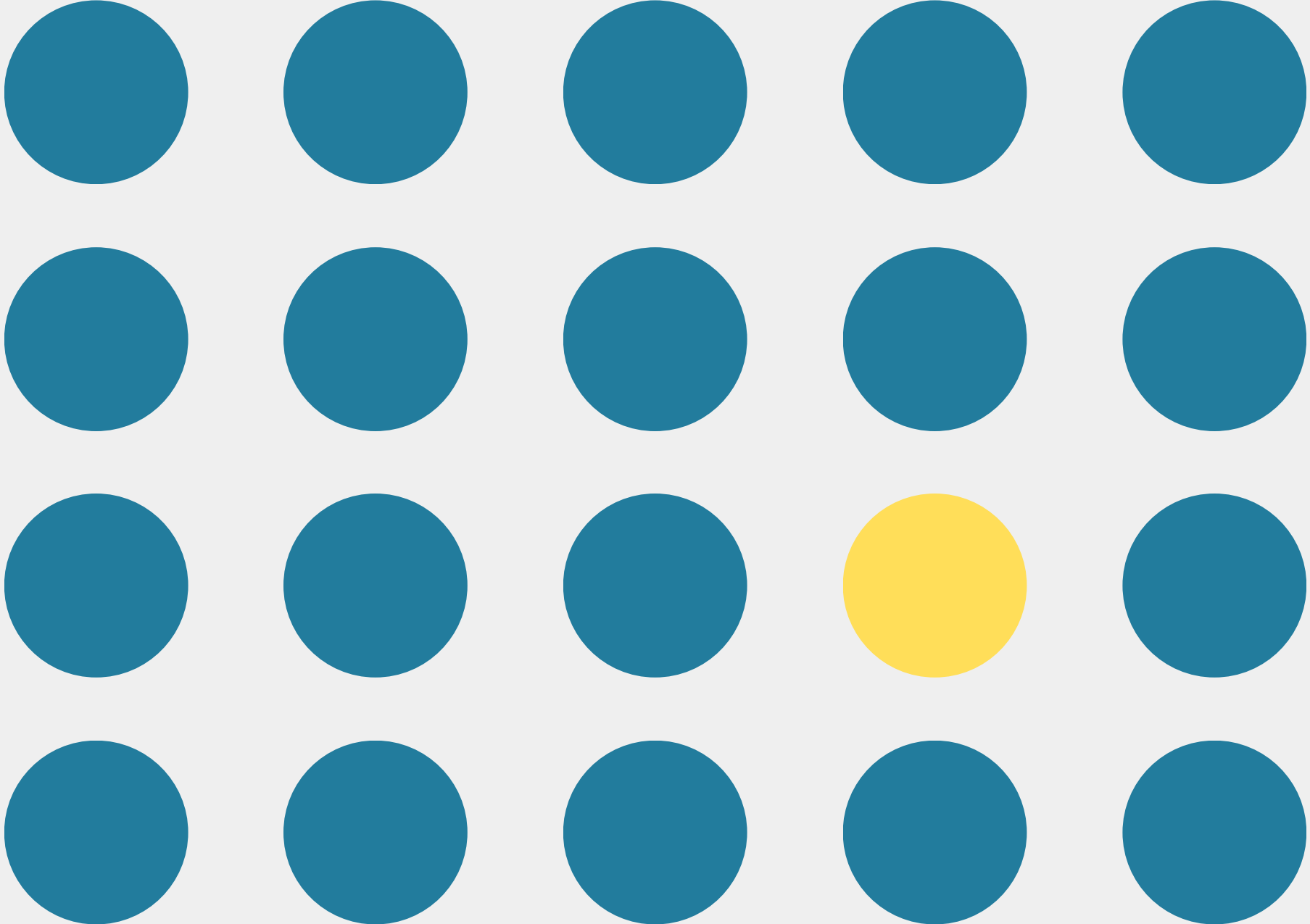
<https://www.bustle.com/articles/90291-inside-out-casts-amy-poehler-as-literal-joy-duh-so-we-predicted-what-leslie-knopes-emotions>





How?





HEALTH

A yearslong push to remove racist bias from kidney testing gains new ground



By [Theresa Gaffney](#) July 17, 2020

[Reprints](#)



ADOBE

For years, physicians and medical students, many of them Black, have warned that the most widely used kidney test — the results of which are based on race — is racist and dangerously inaccurate. Their appeals are gaining new traction, with a wave of petitions and papers calling renewed attention to the issue.

How We Analyzed the COMPAS Recidivism Algorithm

by *Jeff Larson, Surya Mattu, Lauren Kirchner and Julia Angwin*

May 23, 2016

[← Read the story](#)

Across the nation, judges, probation and parole officers are increasingly using algorithms to assess a criminal defendant's likelihood of becoming a recidivist — a term used to describe criminals who re-offend. There are dozens of these risk assessment algorithms in use. Many states have built their own assessments, and several academics have written tools. There are also two leading nationwide tools offered by commercial vendors.

We set out to assess one of the commercial tools made by Northpointe, Inc. to discover the underlying accuracy of their recidivism algorithm and to test whether the algorithm was biased against certain groups.

Our analysis of Northpointe's tool, called COMPAS (which stands for Correctional Offender Management Profiling for Alternative Sanctions), found that black defendants were far more likely than white defendants to be incorrectly judged to be at a higher risk of recidivism, while white defendants were more likely than black defendants to be incorrectly flagged as low risk.

WELCOME

01 - BRANDING

02 - WEBSITE

03 - SOCIAL MEDIA



The image features a central text element surrounded by four decorative geometric patterns in the corners. The top-left pattern consists of a series of parallel lines radiating from a point. The top-right pattern is a cluster of overlapping semi-circles in yellow, red, teal, and dark blue. The bottom-left pattern is a cluster of overlapping semi-circles in red, teal, and dark blue. The bottom-right pattern consists of a series of parallel lines radiating from a point, mirroring the top-left pattern.

THANK YOU